





CRAFTED WITH
PRIDE
IN THE
USA

At DiamondBack Truck Covers, we're a team dedicated to rolling up our sleeves, getting dirty, and building quality products that make a difference. We're proud to have always called Philipsburg, PA our home. From smalltown USA, we are challenging the status quo of what truck bed covers should be so that we can all do more with our trucks.



DO MORE.

DiamondBack Truck Covers are about getting more done with your truck by using it like a toolbox and loading it like a flatbed. A DiamondBack will change the way you use your truck by letting you secure more and carry more, making your truck capable of more.



THE MOST USEFUL TRUCK BED COVER.

HAUL ON TOP

With up to a 1600 lb. hauling capacity, where there's a DiamondBack, there's a way. Truck bed full? Carrying something that doesn't fit in the bed? Transporting the unexpected? Haul it on top.

THEFT PROTECTION

Rugged die-cast zinc lock handles on the access panels of a DiamondBack keep your gear secure by actuating 3/8" deadbolt-style rods directly under the bed rails of your truck.

WEATHER PROTECTION

A thick neoprene compression gasket runs along the perimeter of the cover to create a barrier to water, snow, or ice, keeping your cargo dry.



REMOVABLE

Keep your options open. Go from locked and sealed to open bed in just minutes, all by yourself.

10
MINUTES TO
UNINSTALL

50
POUNDS MAX
PER PANEL

1
PERSON
REQUIRED*


**ONE COMMON
TOOL REQUIRED**

*Two people are required to remove the DiamondBack 180



 **FOLDABLE**

Tall cargo? No problem. Large access panels fold back in seconds to open up bed space. Strap the folded panel down against the rest of the cover and you're ready to go.

 **ACCESS**

It's quick & easy. Items in your bed always seem to slide to the front. With a DiamondBack, you have quick and easy access to all parts of your bed. Just open a panel and grab.

DIAMONDBACK HD®



A WORKHORSE SO YOU DON'T HAVE TO BE.

Perfect for ATV owners, sportsmen, contractors, and anyone who wants the best of the best. Designed for people who work out of their truck during the week and have fun with them on the weekends, the DiamondBack HD is a cover that demands more from your truck.




HAUL UP TO
1,600 LBS.

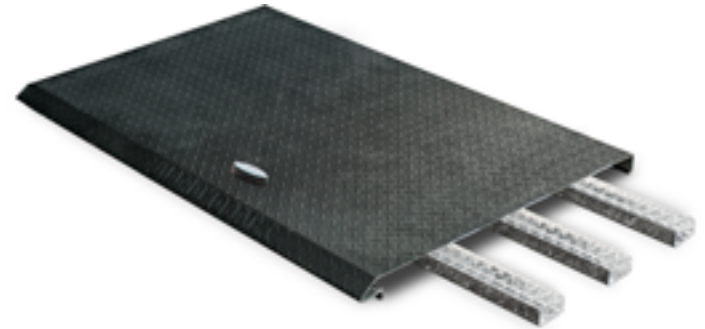
 **1,600lb** hauling capacity

 **.100"** 3003 alloy aluminum grade

 **12** tie-down cleats pre-installed

 **2** opening panels 1 front, 1 rear

 **50lb** maximum panel weight








Structural support members spread cargo weight out over all four bed rails of your truck. They're the "ribs" of the cover, giving it strength unmatched by any other tonneau cover on the market.



CONVENIENCE IS PRICELESS.

You always have things in your truck bed like tools, gear, and other items. The DiamondBack SE is designed for people who want convenience. Now you can haul the expected or unexpected, while keeping those everyday items in your bed.

-  **400lb** hauling capacity
-  **.080"** 3003 alloy aluminum grade
-  **4** tie-down cleats pre-installed
-  **2** opening panels 1 front, 1 rear
-  **35lb** maximum panel weight



DIAMONDBACK 270®




TOOLBOX UP FRONT. TRUCK COVER IN THE BACK.

The DiamondBack 270 offers a combination of versatility, security, and easy access that's second to none. It's part toolbox, part truck bed cover, and helps you use your truck like a truck.



 **400lb** hauling capacity

 **.080"** 3003 alloy aluminum grade

 **0** tie-down cleats pre-installed/
option available

 **3** opening panels
2 side, 1 rear

 **35lb** maximum panel weight



Three access panels make for easy access to your cargo from all the way around your truck. Optional storage bins are made to help keep you and your things organized, so you can spend less time searching and reaching for things and more time doing things.


MOVES LIKE A BUTTERFLY. WORKS LIKE A BEE.


With two near full-length, side-opening panels, you now have complete open access to your entire bed from both sides of the DiamondBack 180. This means you can work and play directly out of your truck without having to crawl into the bed to reach stuff.



 **400lb** hauling capacity

 **.080"** 3003 alloy aluminum grade

 **0** tie-down cleats pre-installed / option available

 **2** opening panels 2 side

 **40lb** maximum panel weight



IT'S AN ATV HAULER & A TRUCK BED COVER.

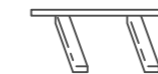
Combining the 1600 lb. hauling capacity of DiamondBack HD with the safety of DiamondBack ATV Carrier accessories gives you the most versatile way to haul one or two ATVs with your truck. Secure the gear in your bed. Free up your hitch. And go.



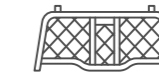
Use your hitch to tow a boat, camper, or even more ATVs all with one truck.



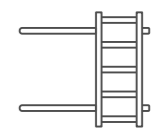
ATV RAMPS
12' long x 15" wide
Fold down to 76"
3" side walls for safety



SIDE RAILS
Act as tire stops
& detach when
not in use.



CAB GUARD
Mounts to the HD
to provide window
protection.



EXTENSION DECK
Provides an extra 21"
to allow hauling two ATVs
on a standard bed.

A NEW WAY TO HAUL YOUR SIDE-BY-SIDE.

Never before have you been able to haul your side-by-side vehicle without a trailer, until now. Haul your side-by-side on top, secure your gear in the bed underneath, and free up your hitch to be able to finally take along that camper, boat, or more off-road vehicles.



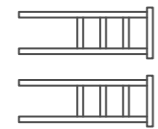
HEADACHE RACK

Mounts to the HD to provide window protection.



TAILGATE-PANEL JACK POST

Enables operation of tailgate by supporting tailgate panel, & removes when not in use.



REAR EXTENSION

Extends your bed to allow you to haul a side-by-side on a standard bed.





ACCESSORIES

Making the best even better with accessories that help you get a little more out of your DiamondBack.

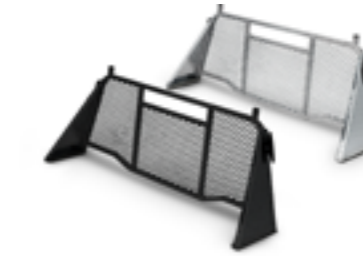
REAR WINDOW PROTECTION



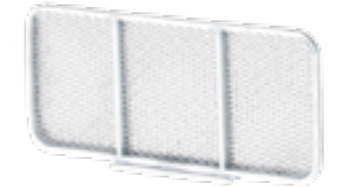
Low Profile Cab Guard



Headache Rack



HD Cab Guard



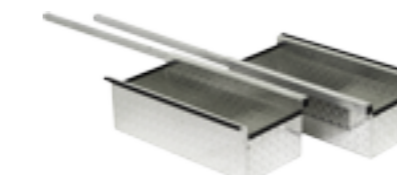
Ladder Rack Cab Guard

HAUL ON TOP



Cleats

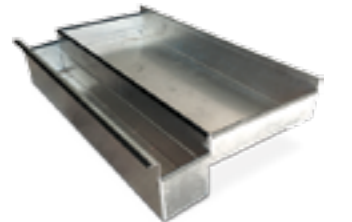
BED ORGANIZATION



Side Boxes



Cross Bin



Single Side Bin

LADDER RACKS



Bike Rack



Rear Rack



Ladder Rack

	DIAMONDBACK ^{HD}	DIAMONDBACK ^{SE}	DIAMONDBACK ²⁷⁰	DIAMONDBACK ¹⁸⁰
Hauling capacity	1,600lb	400lb	400lb	400lb
3003 alloy aluminum grade	.100"	.080"	.080"	.080"
Tie-down cleats pre-installed	12	4	0	0
Opening panels	2 <small>1 front, 1 rear</small>	2 <small>1 front, 1 rear</small>	3 <small>2 side, 1 rear</small>	2 <small>2 side</small>
Accomodates tall cargo	Yes	Yes	Yes	No
Removal time	10 _{min}	10 _{min}	10 _{min}	10 _{min}
Maximum panel weight	50lb	35lb	35lb	40lb
Maximum cover weight	125lb	90lb	110lb	105lb

Additional Construction:

3/8" steel lock rods - die-cast zinc, keyed lock handles - stainless steel external hardware - zinc-plated steel internal hardware - 5356 alloy TIG welds



WWW.DIAMONDBACKCOVERS.COM

(800) 935-4002



3 YEAR
WARRANTY

Inc.
5000

The installation and use of any rail-mounted accessory may cause minor aesthetic damage to the vehicle exterior. DiamondBack makes no claims or warranties whatsoever as to a particular vehicle's ability to support rail-mounted accessories without incurring damage.

See your vehicle manufacturer's specifications for rail-mounted accessories.