



INSTALLATION GUIDE

CVR-SB2-1

15 minutes
Normal install time

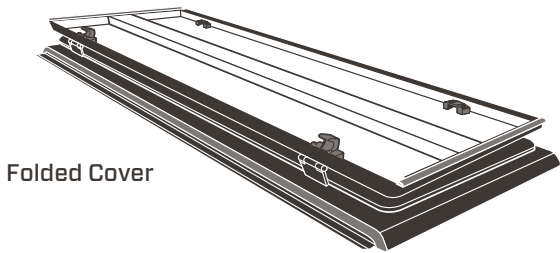
Keep an eye out for these icons:

! IMPORTANT!
Important installation information

★ Helpful Hints
Tips to assist installation

PARTS INCLUDED:

TOOLS REQUIRED:



Folded Cover



Tie-Down Straps (2)



Automotive Silicone Spray



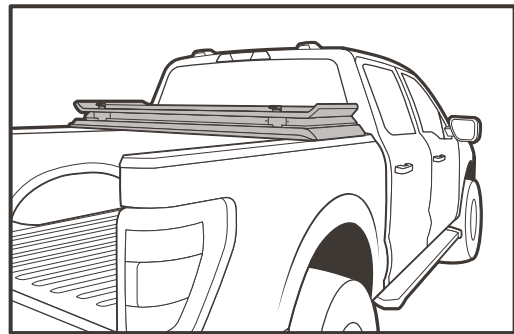
Utility Knife

! PRE-INSTALLATION NOTES (REVIEW ALL OTHER INCLUDED INSTALLATION GUIDES BEFORE BEGINNING)

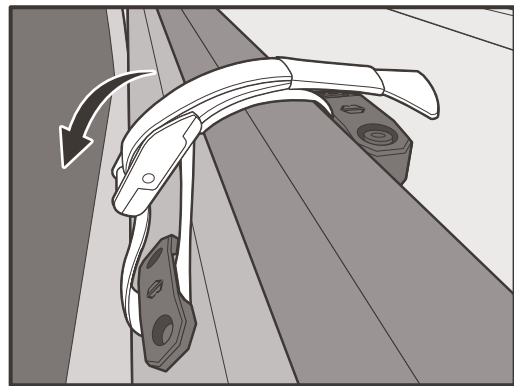
- Most trucks require the **bulkhead weatherstrip** to be installed and some require additional bulkhead preparations. Please refer to the instructions in the **Bulkhead Prep Kit** prior to mounting the cover.
- If your cover includes shims, affix the included bed rail shims first and reference their included instructions.
- Due to differences in tailgate designs, we recommend an application of automotive silicone spray on the tail panel weatherstrip. This will promote smoother operation and help avoid wear and tear.

INSTALL COVER

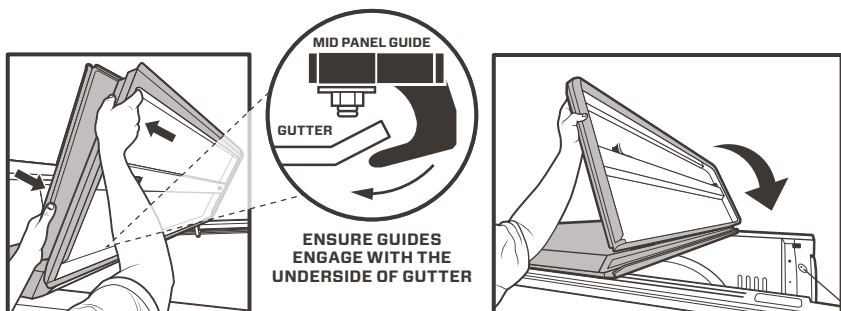
1 Place cover on top of the bed rails near the cab and oriented so that the tie-down straps are closest to the cab.



2 Remove straps to allow cover to unfold.



3 Carefully unfold the cover towards the tailgate by applying force at the double-hinge area and allowing gravity to assist with unfolding.

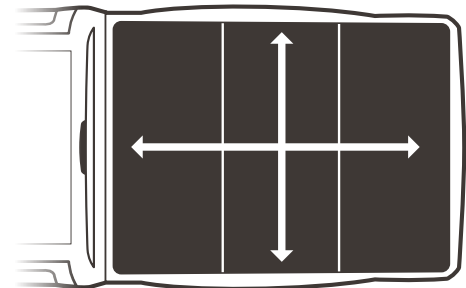


Holding mid and tail panels tightly together, begin unfolding towards tailgate.

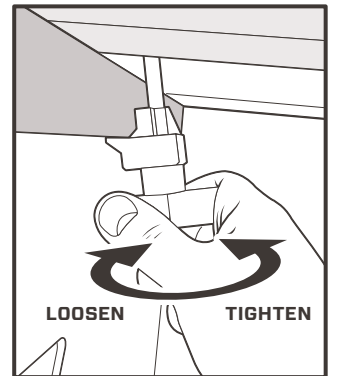
Unfold tail panel towards tailgate.

! Do not lift directly upwards at the hinge area as it can result in damage to the gutter and guides.

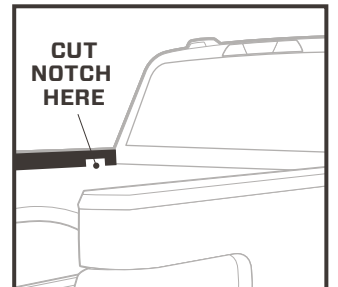
4 Position the cover front to back so that the front of the cab panel lines up with the outside edge of the center of the bulkhead. Center the cover side-to-side on the truck.



5 Release cab panel clamp from the track, position cab clamp jaw beneath the bedrail. **Tighten until stud contacts the bedrail cap, or a noticeable change in effort is felt.** Then turn one more full rotation.

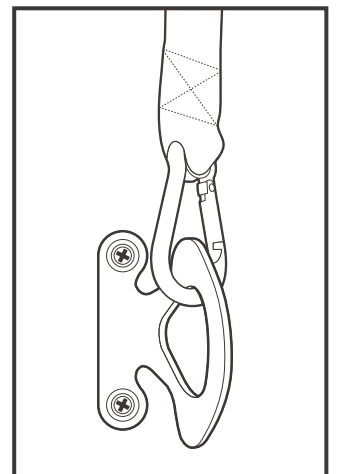


! If necessary, trim excess bed rail cap at each clamp jaw location so that it makes direct contact with the metal bed rail.



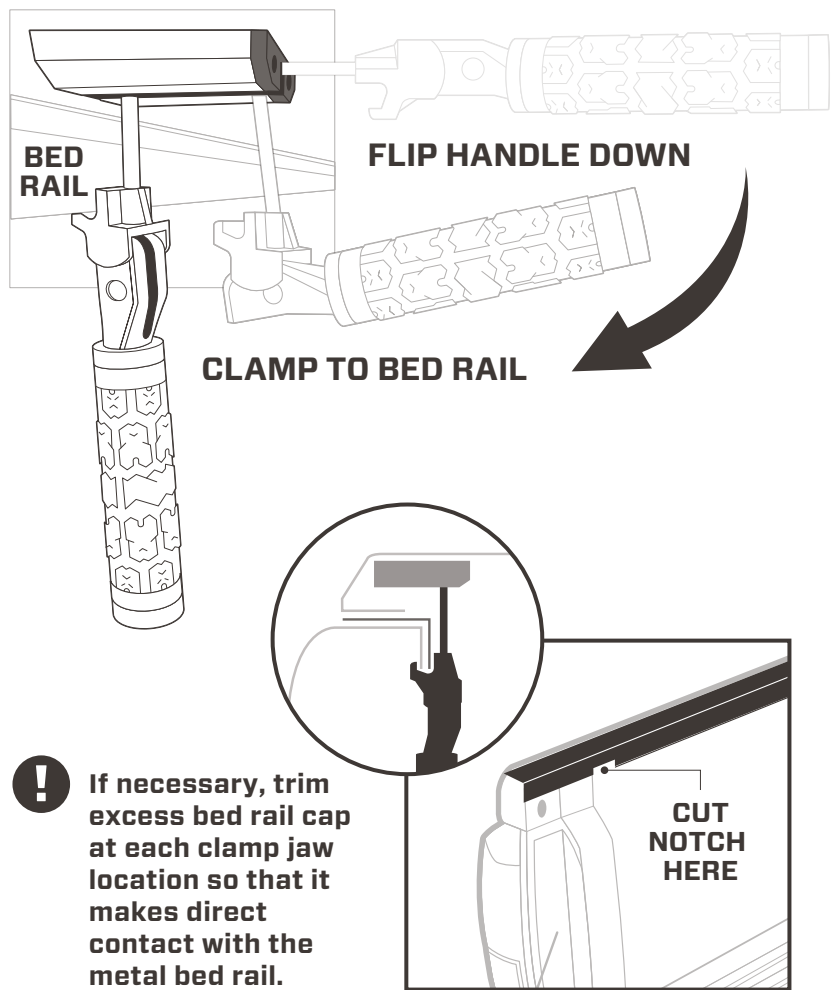
6 Attach safety tethers to the lowest available forward tie-down point in the bed of the truck.

! Do not operate vehicle without safety tethers engaged.



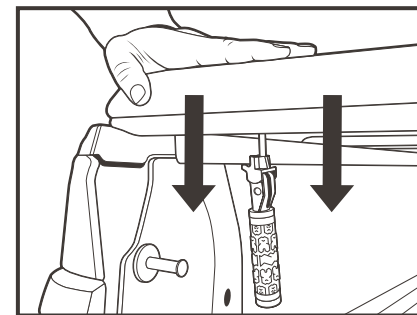
INSTALL COVER (CONTINUED)

7 Release the handle from the track and position clamp jaw beneath the bed rail to begin engaging.

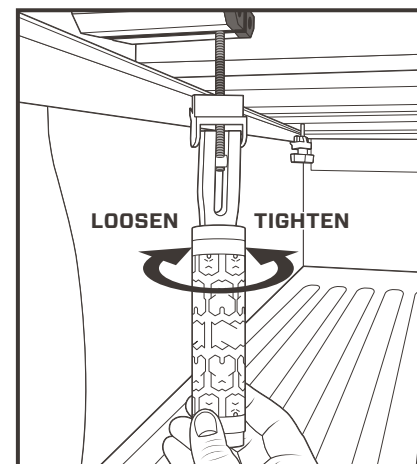


! If necessary, trim excess bed rail cap at each clamp jaw location so that it makes direct contact with the metal bed rail.

8 Thoroughly compress the weatherstrip by applying a significant amount of downward pressure to the tail panel and engage the clamp. The clamp tension should be firm enough to clamp the cover securely to the bed rail with one hand. Adjust the tension by rotating the handle clockwise to tighten, and counter clockwise to loosen.



★ Due to differences in tailgate designs, we recommend an application of automotive silicone spray on the tail panel weatherstrip. This will promote smoother operation and help avoid wear and tear.

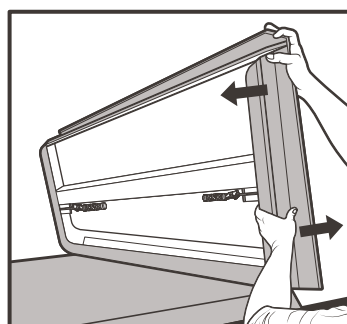
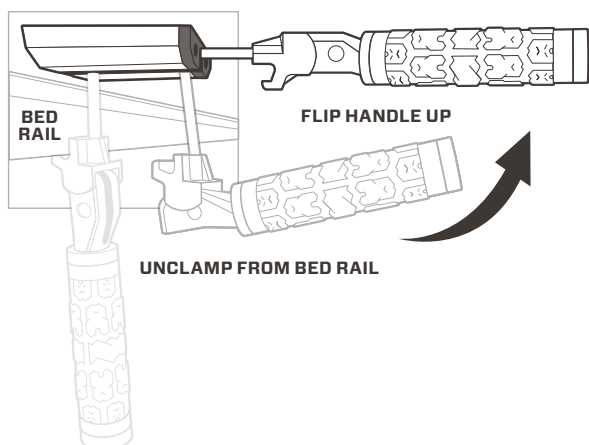


★ Some automatic tailgates may encounter resistance while opening and closing during break-in period. Manual assistance may be required.

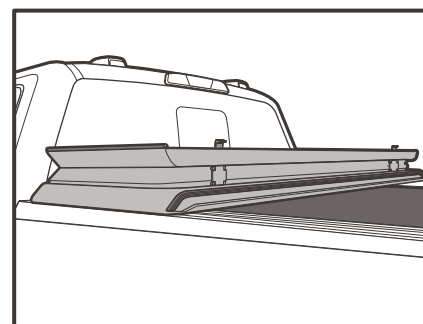
9 Leave the cover closed and clamped for 24 hours to allow the pressure-sensitive weatherstrip adhesive to fully cure.

TO FOLD COVER:

STEP 1 Release clamp and flip handle up, ensuring it locks in place (flush with panel).

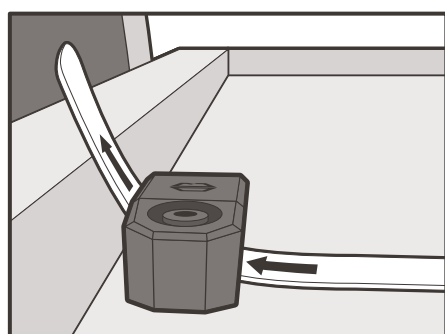


Lift tail panel and fold to mid panel. While holding tightly together, fold on to cab panel.

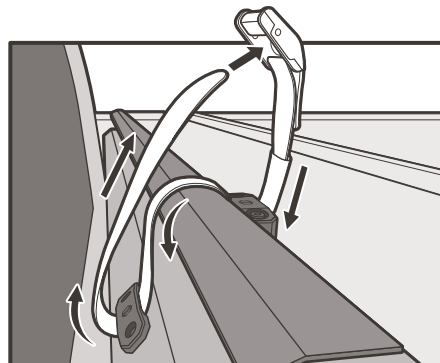


! Apply force towards the tailgate at the double-hinge area when folding and unfolding the mid panel. Do not lift directly upwards at the hinge area. Let gravity assist in folding/unfolding.

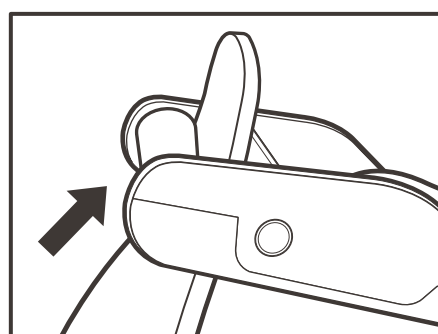
STEP 2 Secure cover with included straps before driving in the open position.



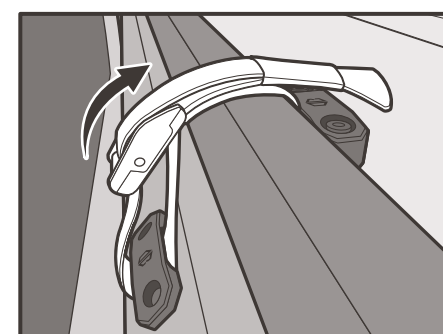
Feed straps through underside tie-down



Route strap accordingly



Ensure strap is properly inserted through buckle (with latch facing up)



Pull strap tight and make sure buckle is securely engaged

! Do not operate vehicle without securing the folded cover.