



**DIAMONDBACK**

DiamondBackCovers.com / 800 935 4002

**ANCHOR PLATES**

AX-14

# INSTALLATION GUIDE

**20 minutes**  
Normal install time

Keep an eye out for these icons:

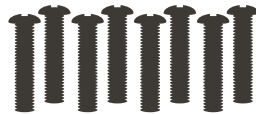
**IMPORTANT!**  
Important installation information

**Helpful Hints**  
Tips to assist installation

## PARTS INCLUDED:



Anchor Plates (4)



Button Head Bolts (8)



Sealing Washers (8)



Lock Nuts (8)

## TOOLS REQUIRED:



Drill



1/4" Bit



Ratchet Wrench



7/16" Socket



5/32" Hex Key



Tape Measure (optional)

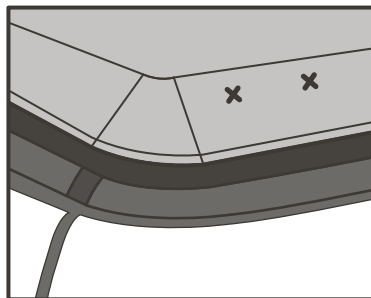


Marker (optional)

## INSTRUCTIONS

**1** Mark the desired mounting location for your anchor plates (see note regarding **Switchback covers** below). Anywhere along the beveled edge or top surface of the cab and tail panels will work.

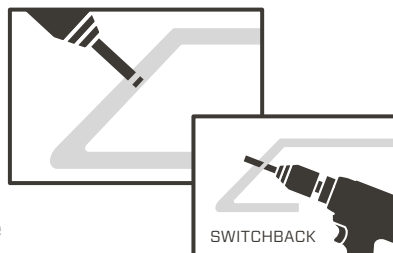
★ Before drilling, check to confirm that your bolt ends will not strike any hardware or structural members of the cover. Adjust the locations of your anchor plates accordingly.



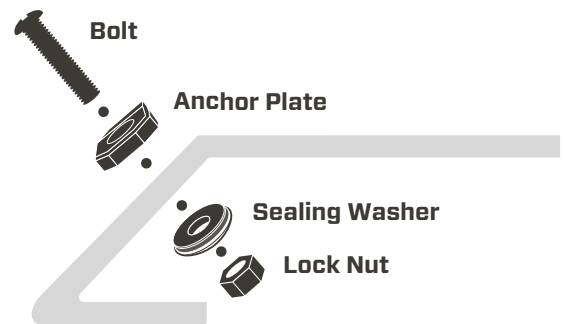
★ NOTE: For **Switchback covers**, you have the option to use pre-lasered etch marks. Fold panels and locate laser etch marks on the underside of the cab and tail panel. Cover removal may be required.

**2** Drill the marks using a 1/4" bit.

★ If drilling the etchmarks on a **Switchback**, it is easiest to do so from the underside of the cover.



**3** Insert bolts through the assembly as shown. Install lock nut finger tight.



**4** Tighten the lock nuts with a 7/16" socket and a 5/32" hex key. Be cautious not to overtighten.

★ To use traditional hook end straps, 1" wide soft-tie loops may be required.

