

INSTALLATION GUIDE

BH-13

15 minutes
Normal install time

Keep an eye out for these icons:

! IMPORTANT!
Important installation information

★ Helpful Hints
Tips to assist installation

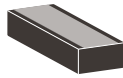
PARTS INCLUDED:



Bulkhead Weatherstrip



Sealing Blocks x (2)



Shims 1/4" x (8)



Foam Tape Rolls x (2)

TOOLS REQUIRED:



Rubbing Alcohol



Clean, Lint-Free Cloth



Non-Marring Pry Tool



Scissors

PRE-INSTALLATION NOTE:

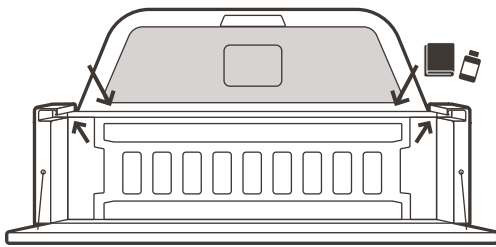
To ensure the weatherstrip and sealing mount tape adhere properly, make sure the temperature of the cleaned surface is at least 50°F and will remain so for at least a day.



50°F min.

INSTRUCTIONS - WEATHERSTRIP

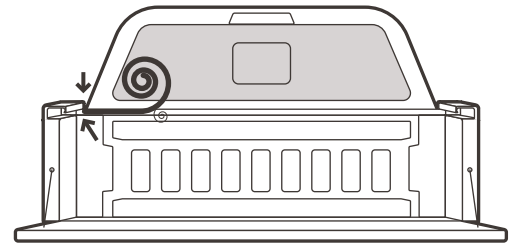
- At the bulkhead, clean the top of the bulkhead and empty space underneath the bed rails thoroughly with a clean, lint-free cloth using rubbing alcohol. Allow to dry.



- !** The cleaned areas should be both dry and absolutely free of dirt, oil, or any other contaminants prior to affixing the weatherstrip.

- Affix the weatherstrip to the top of the bulkhead so it's:
 - Tight against the interior edges of the bed rail caps at both ends, and
 - The adhesive is covering each hole on the top of the bulkhead.

- Starting on the driver's side, slowly remove the adhesive release liner and affix the weatherstrip to the top of the bulkhead, pressing down firmly as you go.

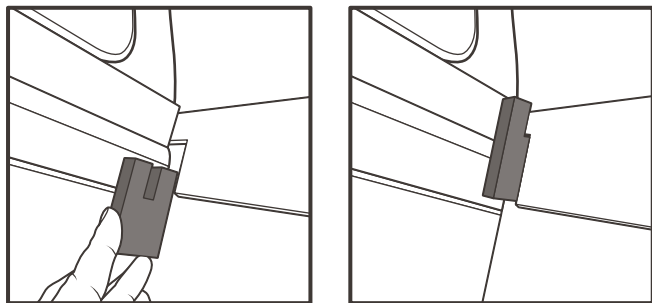


- !** Press down firmly with your thumb on the weatherstrip along its entire length.
- !** Never stretch the weatherstripping when applying, as it will cause the adhesive to fail.

- ★** If there's a bed liner on the bulkhead, go ahead and affix the weatherstrip to it, but make sure to align the weatherstrip to the actual, painted metal bulkhead underneath.

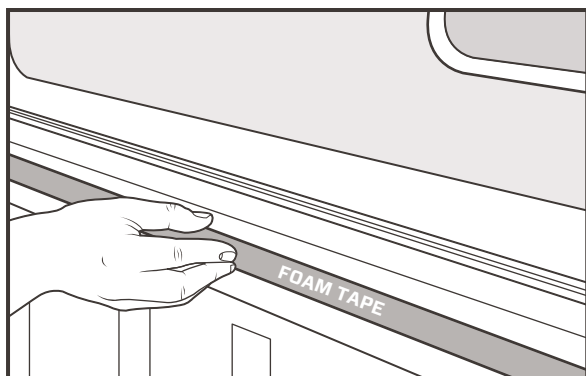
INSTRUCTIONS - FOAM SEALS & SHIMS

- 4 Place one of the sealing blocks into the area at the bulkhead underneath the bed rail as shown. Repeat on opposite side.

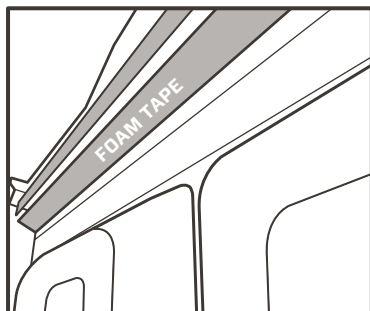


NOTE: If you have a plastic bedliner, you will proceed to step 7.

- 5 Using the foam tape, adhere along the entire bulkhead face, covering any through holes or openings. Start on the driver side and work towards the passenger side ensuring a straight seal.

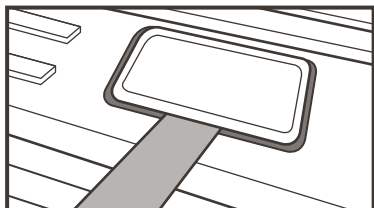


- 6 Repeat on the face angled downward.



- 7 Locate the bed rail cap access plates on the top of the cap. You will be removing the center plate for HD/SE/270s and the tail plate for 180s.

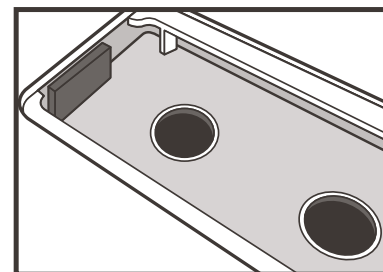
- 8 Slightly pry up on the center section with a non-marring pry tool and remove the plate.



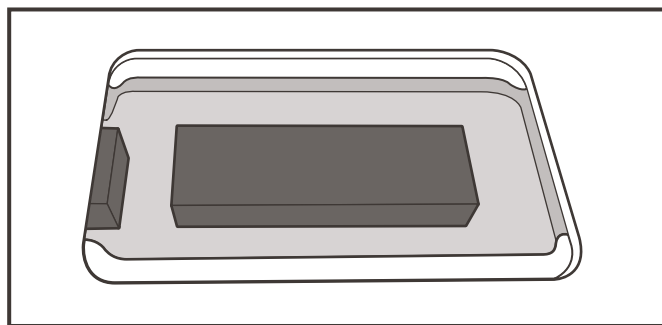
- 9 You will be locating the shims in your care box. For the HD/SE/270, you will be placing 2 shims per side. For the 180, you will place 1 shim per side. (180 Orientation shown in Step 11). For the Switchback, you will not use shims.

- 10 Start by placing a shim in the pocket and sliding it under the bed rail cap towards the cab side.

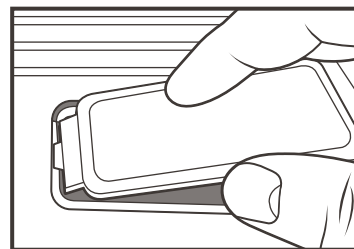
★ Adhesive liner does not need to be removed.



- 11 Now take the 2nd shim and place it in the center of the pocket



- 12 Replace the plate by sliding the longer tab under the bed rail above a shim and flexing the plate slightly to engage the other tab under the bed rail.



★ This will be slightly humped as the shim will compress under the clamp.

- 13 After you install your cover, leave it closed and locked for 24hrs to allow the weatherstrip, which is pressure-activated, to fully cure.