

# RATCHET LOOP STRAPS

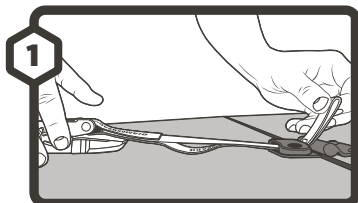
**USE GUIDE** | 12' x 1" | 2-PACK

SAFE WORK LOAD: **400 LB** | BREAK STRENGTH: **3,000 LB**

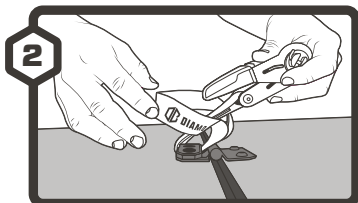
INCLUDED PARTS: **RATCHET X 2**



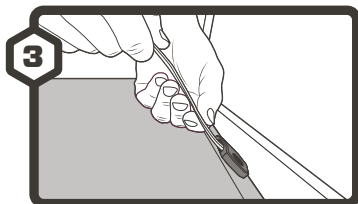
**STRAP X 2**



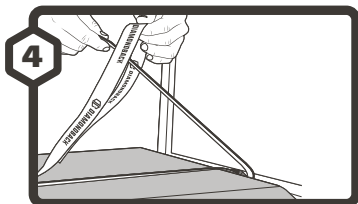
1 Begin by threading looped end of ratchet through anchor plate.



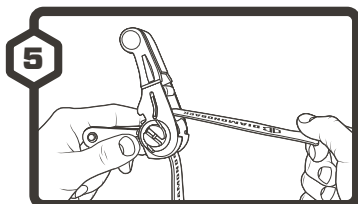
2 Then, pull the ratchet end through the looped end tight to form cinch at 1st anchor point.



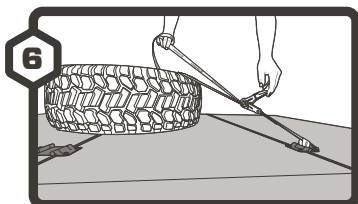
3 Feed the flat end of the strap through the next anchor plate.



4 Then, pull flat end through loop end of strap and pull tight to form cinch at 2nd anchor point.



5 Connect the ratchet to the strap by feeding the flat end of the strap through the ratchet cylinder core and back through the gate.



6 Finally, ratchet until snug on top of cargo.